

SALINITY

- On the densimeter, there is a green marked zone.
- An ideal salinity (1.025) will put the green zone just above the water surface (photo 1).
- When there is not enough salt in the water, the green zone will disappear (partly) under the water (photo 2).
- When there is too much salt in the water the green zone will be above the water surface (photo 3).
- Always use special aquarium salt !

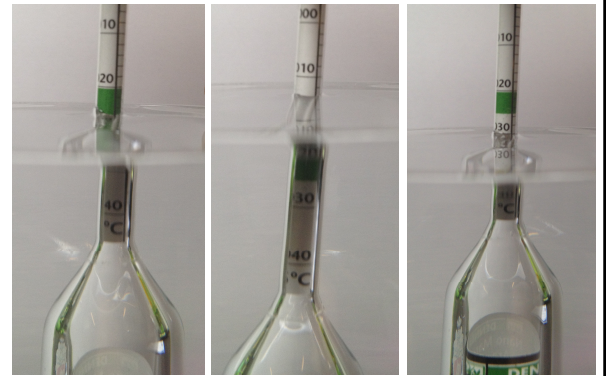


Photo 1

Photo 2

Photo 3

TEMPERATURE

- The ideal water temperature for your homarium is 7°C.
- The water temperature is constantly displayed on the digital thermostat (photo 4).
- If you need to know the pre programmed temperature of your homarium, then press the SET button.
- If you need to shutdown the cool unit for a while, push the ⏻ button on the controller (photo 5). The display shows "OFF".
- Twice a year, the condenser of the cooling unit needs to be vacuumed (photo 5). You'll find this in the cabinet.



Photo 4



Photo 5

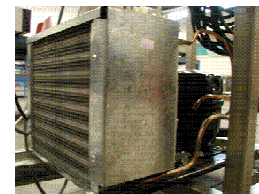


Photo 6

OXYGEN

- When you lift the lid of the pump compartment, you will find the oxygen valve (photo 7).
- If you close the valve, there will be no bubbles in the homarium (photo 8).
- If you open the valve completely, there will be too much bubbles in the homarium (photo 9).
- The ideal setting is half open.
- When you need to dismount the pump for cleaning reasons, you can see on photo 10 how the system is built. From the pump, a tube leaves towards the tank. The oxygen valve is on a small tube, placed vertically in the horizontal tube.
- You can pull out, with a moderated force, the vertical valve-tube out of the other, horizontal, tube.
- When reassembling, see that the slant way side is always mounted facing away from the pump (photo 10).

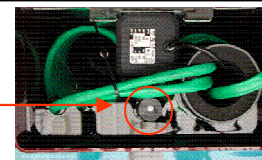


Photo 7

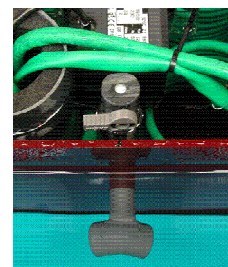


Photo 8

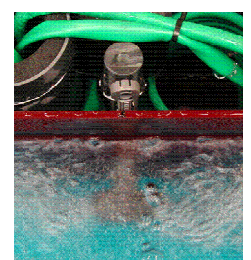


Photo 9

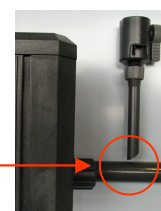


Photo 10